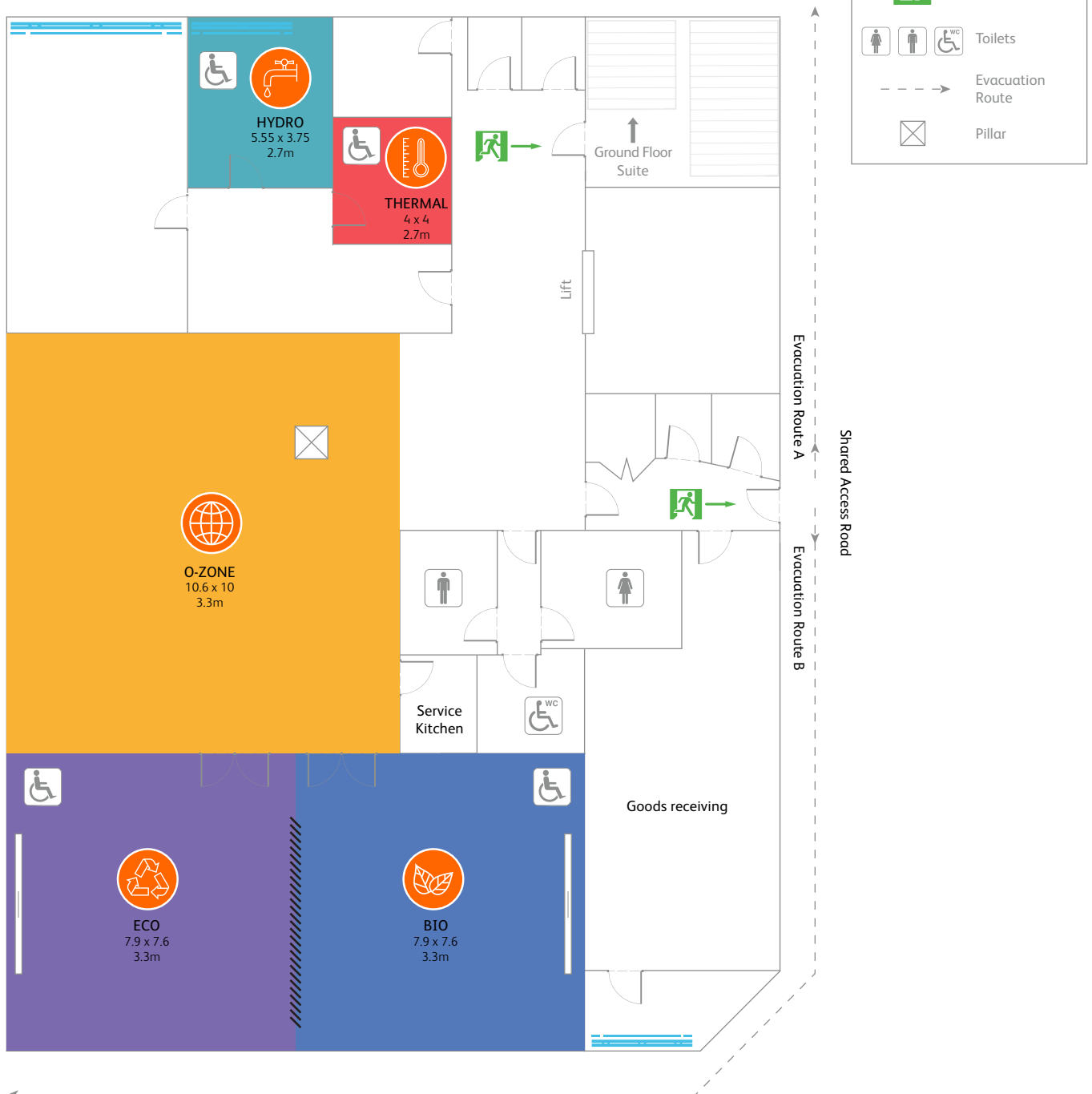


Lower Ground Floor Suite



15 Hatfields room capacity

| Room | Room styles | Cabaret | Boardroom | Theatre | U-Shape | Standing reception | Classroom | Exam desks | Sit down meal |
|---------------------------|-------------|---------|-----------|---------|---------|--------------------|-----------|------------|---------------|
| Bio | | 40 | 25 | 55 | 20 | 75 | 30 | 25 | 40 |
| Eco | | 40 | 25 | 55 | 20 | 75 | 30 | 25 | 40 |
| O-Zone | | | | | | 200 | | | |
| Hydro | | | 12 | | | | | | |
| Thermal | | | 8 | | | | | | |
| Bio + Eco | | 80 | 40 | 120 | 35 | 150 | 56 | 55 | 80 |
| Bio + Eco + O-Zone | | | | | | 300 | | | |
| Access Road - Height 2.7m | | | | | | | | | |
| Access Road - Width 2.8m | | | | | | | | | |

This table is intended for guidance only. Room viewings are always recommended to ensure we meet your requirements.